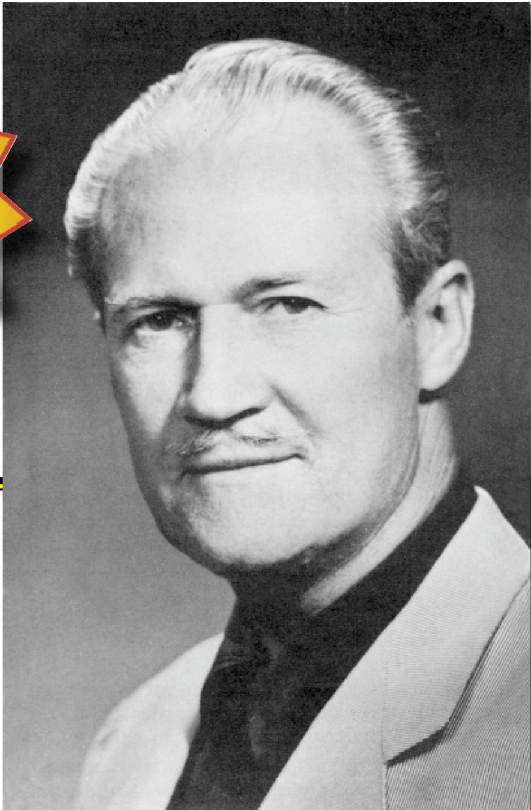


CLARENCE ALLEN

Artist/Writer,
Durant and Tulsa



Clarence Allen was art director and cartoonist at the Tulsa Tribune and World for 39 years. He was a charter member of the National Cartoonists Society.

He was instrumental in promotions that helped acquire the Philbrook and Gilcrease museums in Tulsa, the Studio Club, Spotlight Club, Jaycees national headquarters and the 21st bridge over the Arkansas River in Tulsa. His sketches figured in the planning of the Tulsa Civic Center and River Parks.

He was born in Georgia. When he was three, his parents moved to Durant, Oklahoma.

Allen attended Southeastern State College in Oklahoma and, after military service in World War I, the Art Students League in New York. After several jobs in art in New York City, including working on the Mutt and Jeff animated cartoons, he moved to San Antonio and then to Tulsa, where his brother was promotion manager for the Tulsa World.



He won six national awards as a cartoonist including the Freedoms Foundation Honor Medal.

Clarence Allen